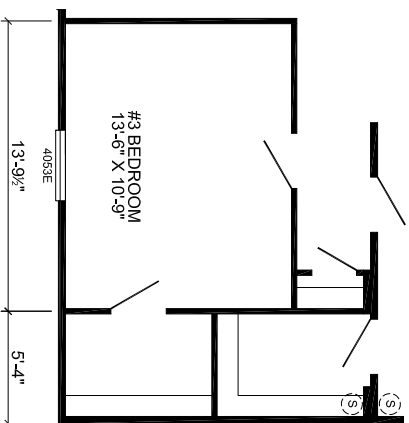
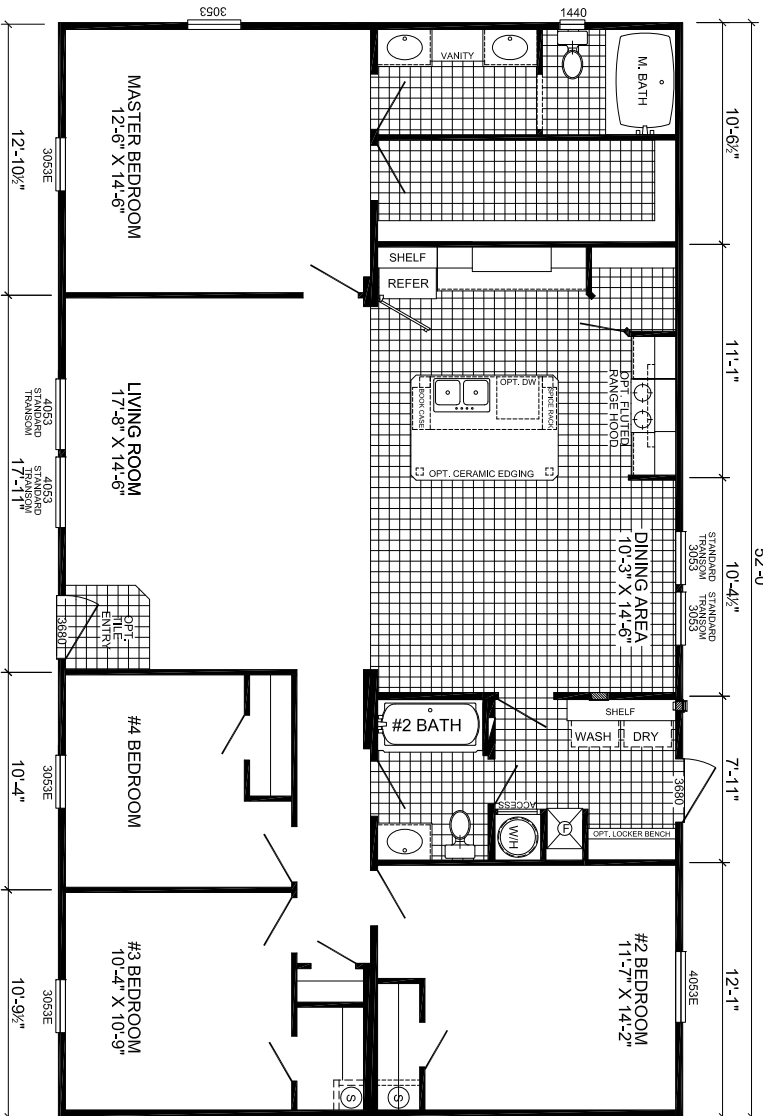
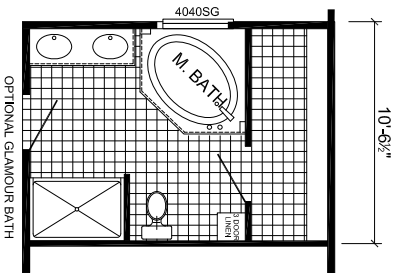
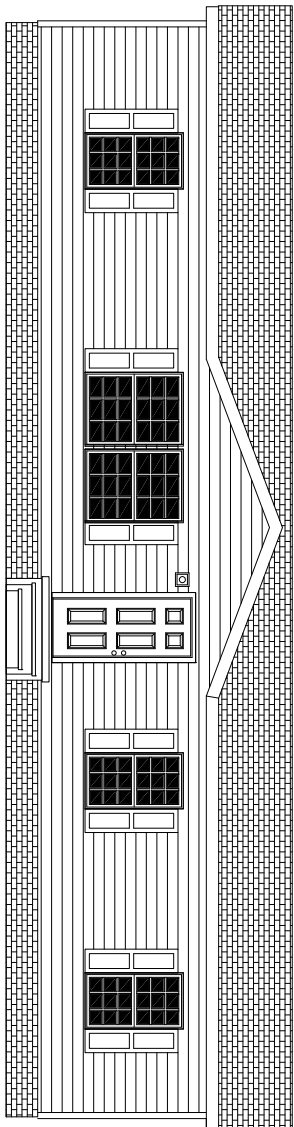


# DUKE



## U-3524D-OAK

## 4-BEDROOM / 2-BATH

## 32 X 56 - Approx. 1525 Sq. Ft.

- Date: 5-22-2018
- \* All room dimensions include closets and square footage figures are approximate.
  - \* Transom windows are available on optional 9'-0" sidewall houses only.
  - \* Underpinning shown is optional.
  - \* Live Oak Homes reserves the right to modify product offering at any time.

## OPTIONAL 3 BEDROOM LAYOUT